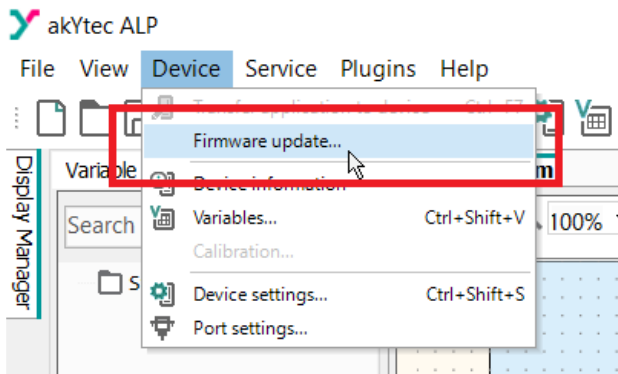


Firmware update procedure:

1. Connect the device via USB or power it on while holding the Service button.



2. Keep holding the button until the red warning LED starts blinking rapidly. This means the device has entered bootloader mode.
3. Open ALP 3.0.382 or newer.
4. Go to Device → Firmware Update.



5. Select the correct PR225 modification according to the device marking.
6. Start the firmware update.

The update usually takes about 1–2 minutes.

Please do not disconnect the device or interrupt the process during the update. Once the update is complete, the device should be recognized normally in ALP.